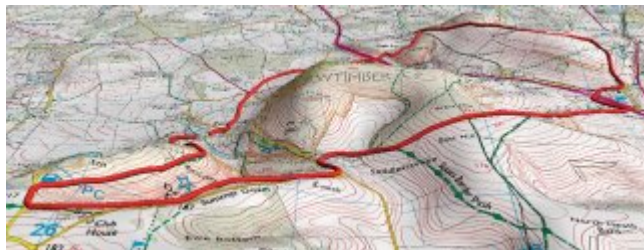


# Poynings

## Poynings, Saddlescombe, Wolstonbury Hill, Newtimber



The Gorse Fox strayed a little further east for this walk, grey, but dry day. Low cloud hung along the Downs, but it was warm enough to walk in shirt sleeves.

This route started in the village of Poynings which is about one third in from the left of this map, down in below the north face of the Downs. The plan was to follow this route anti-clockwise, round the rim of the Dyke, across Summer Down and Saddlescombe and down to Haresdean, where the route crossed the A23 (Brighton Road). The route then continued up Wolstonbury Hill, down past the chalk pits, and then back to A23. From there it was across Newtimber, passing High Beeches and back to Poynings and the car.

[File under: [Sussex Walk](#) , [Poynings](#) , [Saddlescombe](#) , [Newtimber](#) ]  posted by The Gorse Fox at [1](#)

## Leaving Poynings



The Gorse Fox started by heading south from Poynings on a gentle incline that rapidly became a steep incline. This would have been a mess if there had been more rain, but it was still fairly firm.

It was fairly evident that there would be no sweeping panoramic views, as the clouds hugged low across the Downs and the humidity limited the visibility.

[File under: [Sussex Walk](#) , [Poynings](#) , [Saddlescombe](#) , [Newtimber](#) ]  posted by The Gorse Fox at [1](#)

## Devil of a Climb



Dyke.

The first climb brought the Gorse Fox to the rim of the

This deep valley folded into the downs is "*the largest chalkland dry combe in Britain and home to many plants and butterflies. From the summit there are dramatic views north towards the Weald and south over The archaeological and ecological diversity of this ancient landscape is such that it has been designated (Environmentally Sensitive Area).*" According to the [National Trust](#) .

Today it was virtually deserted, Gorse Fox saw a couple of dog walkers and a group of 4 cyclists. Other than when they had gone their own ways, Gorse Fox had the place to himself.

[File under: [Sussex Walk](#) , [Poynings](#) , [Devils Dyke](#) ]  posted by The Gorse Fox at [11:53 AM](#)

## Mushrooms



These mushrooms caught the attention. It is hard to gauge scale from the photo, but these were the size of a decent set of side plates.

There were just the two of them, but GF could almost hear Jamie Oliver waxing lyrical about them, and could smell garlic and a dash of red wine.

[File under: [Sussex Walk](#) , [Poynings](#) , [Devils Dyke](#) ]  posted by The Gorse Fox at [11:56 AM](#)

## Devil's Dyke



Looking back into the dry combe that is Devil's Dyke.

GF had walked along the rim on the left and was about to set out along the southern rim (on the right).

Why the "Devil's Dyke"? Well legend says it was dug by the devil himself in an attempt to allow the sea to reach many churches that exist in the area.

[File under: [Sussex Walk](#) , [Poynings](#) , [Devils Dyke](#) ]  posted by The Gorse Fox at [12:07 PM](#)

## Viewpoints



There are several good viewpoints along the southern Dyke, as the GF crosses Summer Down.

This one caught the eye, but the poor light rather flattened colours and the perspective that was so striking as it peered across the entrance to the Dyke across North Hill towards Newtimber Hill.

It was along this stretch that GF caught up with a family who, judging by their accents, came from east Sussex. It was nice to see them enjoying the countryside of their new home, but strangely disconcerting to see how they had when they came to a gate and a stile. The phrase that came to mind was "Get over it".

[File under: [Sussex Walk](#) , [Poynings](#) , [Summer Down](#) , [Newtimber](#) ]  posted by The Gorse Fox at [1](#)

## Saddlescombe



Descending from Summer Down the Gorse Fox had to travel a hundred yards along the road before turning off here at Saddlescombe Farm.

At the Farm, Gorse Fox headed east again, weaving his way between the farm buildings and cottages.

[File under: [Sussex Walk](#) , [Poynings](#) , [Saddlescombe](#) ]  posted by The Gorse Fox at [12:29 PM](#)

## West Hill



From Saddlescombe, Gorse Fox followed the South Downs and over West Hill. This was yet another climb, and needed the occasional pause for breath photos.

Looking back from whence he came, it was decidedly dark and murky, but the clouds were drifting and all seemed to break through here and there.

[File under: [Sussex Walk](#) , [Poynings](#) , [Saddlescombe](#) ]  posted by The Gorse Fox at [12:40 PM](#)

## Jack & Jill





Gorse Fox paused for refreshments at the top of West breeze was blowing, and it warranted another layer of clothing. GF's magic rucksack contains all manner of things so his portable lunch came out and so did a light jacket.

As GF started to descend, the famous Jack and Jill Windmills could just be seen on the opposite side of the valley. GF has another walk planned that will take him up by the windmills)

[File under: [Sussex Walk](#) , [Poynings](#) , [Saddlescombe](#) ]  posted by The Gorse Fox at [1:02 PM](#)

## A Downland Parish



Crossing the A23 brought Gorse Fox up to a small cluster of buildings and this Downland Parish Church (Church of the Transfiguration of Our Lord). This is the parish church of the village and was built in 1170.

It's built at the highest point of the old village, and is on the southern slopes of Wolstonbury Hill... which is the next landmark

[File under: [Sussex Walk](#) , [Poynings](#) , [Pycombe](#) ]  posted by The Gorse Fox at [1:16 PM](#)

## Beware of the Goose



Well, GF supposes that anything can be used for guard assuming it makes enough noise, or is vicious enough.

It was nice to see this warning, however.

(If they had been guard bees, would they have been a SWAT team?)

[File under: [Sussex Walk](#) , [Whimsy](#) ]  posted by The Gorse Fox at [1:19 PM](#)

## Wellcombe Bottom



Gorse Fox has not made his customary comment regarding Bottoms... this is because, until this point in the walk, he had only passed "Ewe Bottom" which was unspeakable and sounded like a childish insult, and "Cow Bottom" that seemed to reinforce the Government's concern about adult obesity.

Wellcombe Bottom, however, was quite a view from Wolstonbury Hill and somehow seemed so appropriate for this section of the Downs that surrounds Brighton.

[File under: [Sussex Walk](#) , [Poynings](#) ]  posted by The Gorse Fox at [1:34 PM](#)

## Wolstonbury Hill



Wolstonbury Hill was the last ascent of this particular intriguing hill with a deep horsehoe shaped valley to the east, old firing ranges, and evidence of earthwork enclosure at the top.

To find out more about archeology of Wolstonbury Hill click [here](#) , or [here](#) .

[File under: [Sussex Walk](#) , [Poynings](#) , [Wolstonbury Hill](#) ]  posted by The Gorse Fox at [1:46 PM](#)

## Newtimber



Plunging (almost the perfect word in the circumstances) down by the chalk pits on the west side of Wolstonbury Hill, the Gorse Fox crossed beneath the A23 and himself in the Parish of Newtimber.

There was growing evidence of the autumnal colours, but still they have a way to go before they really show their finery.

[File under: [Sussex Walk](#) , [Poynings](#) , [Newtimber](#) ]  posted by The Gorse Fox at [2:02 PM](#)

## Newtimber Church



Newtimber Parish Church (St John the Evangelist) dates from the 13th century, but was restored in the 1870s.

For more information click [here](#) .

A little north of the church is Newtimber Place which is a Sussex moated house, built of flint and brick with Horsham stone. Gorse Fox did not include this on today's route, but will return another day to have a look.


[File under: [Sussex Walk](#) , [Poynings](#) , [Newtimber](#) ]  posted by The Gorse Fox at [2:06 PM](#)

## Back at Poynings



Crossing the fields and weaving through the jumbled ruins of Manor Farm, Gorse Fox arrived back at Poynings.

The plaintive cry of a foaming ale called across the village, but GF decided that he would not heed the call.

[File under: [Sussex Walk](#) , [Poynings](#) ]  posted by The Gorse Fox at [2:30 PM](#)

## Poynings Route Profile



Another pleasurable afternoon on the Downs.



It was a shame the sun was obscured and the views were curtailed by the low cloud and humid air, but i anyway.

As with so many of the walks in the Downs, there were times when you can walk for an hour or more an another soul... yet still you have not really drifted more that a few miles from the nearest village or town

Total distance: 8.65 miles

Total Ascent: 1505 feet

Highest point: 668ft

Lowest Point: 185 feet

[File under: [Sussex Walk](#) , [Poynings](#) , [Saddlescombe](#) , [Newtimber](#) ] 

*posted by The Gorse Fox at [3:40 PM](#)*





LEWES DOWN

Saddlescombe Sussex Border Path

North Heath Barn

East Hill

Summer Down

Club House

Eve Bottom

26

182

187

183

176

183

183

183