

Fares

Adults Brighton to Devil's Dyke
£2.80 single, £5.00 return. Local fares available.

Children Up to two children (under 16)
go free when travelling with an adult.
BUS ID holders travel for 70p each way
(except schooldays). Other children (5-13 only)
pay half fare.

Network SAVER tickets are valid for
unlimited travel on all Brighton & Hove Buses'
services. 1 Day Adult tickets cost £7 from the
bus driver, or £5 for BUS ID holders.

National Bus Pass holders travel free.

SAVER tickets bought in advance are
accepted. These include m-tickets from
buses.co.uk/app, 'scratch-off' tickets and
tickets loaded on 'the key' smartcard.
The 'citySAVER' (bought on a bus) is not valid
north of the bypass (Dyke Road Avenue).

Rail tickets Show a rail ticket(s) valid to
Brighton or Hove and get two 77 bus tickets
for the price of one, or a third off an individual
ticket (except Saver tickets).
All prices subject to review

Have you seen?

See the two other 'Breeze up to
the Downs' leaflets about
how to get to Stanmer Park
and Ditchling Beacon. See also our
'South Downs Bus Walks' leaflets.

Call 01273 292480 for copies or go
to www.brighton-hove.gov.uk/breezebuses



Enquiries

Brighton & Hove City Council **01273 292480**
www.brighton-hove.gov.uk/breezebuses
Brighton & Hove Buses **01273 886200**
www.buses.co.uk
traveline **0871 200 22 33** www.traveline.info

Comments and complaints

All feedback is welcome and will help us
improve the service! Call 01273 292480
Email local.transport@brighton-hove.gov.uk
or write to Public Transport, Brighton & Hove
City Council, Hove Town Hall, BN3 3BQ.

Large print? 01273 292480



National
Trust



South Downs
National Park

Brighton & Hove
essential travel for our city



Sustainable
transport

Printed locally on 100% recovered
(recycled) post consumer waste FSC
certified paper, using vegetable inks on
chemical free machinery.

5038 Brighton & Hove City Council
Communications Team
Illustrations: Jo Offer 07941 156308

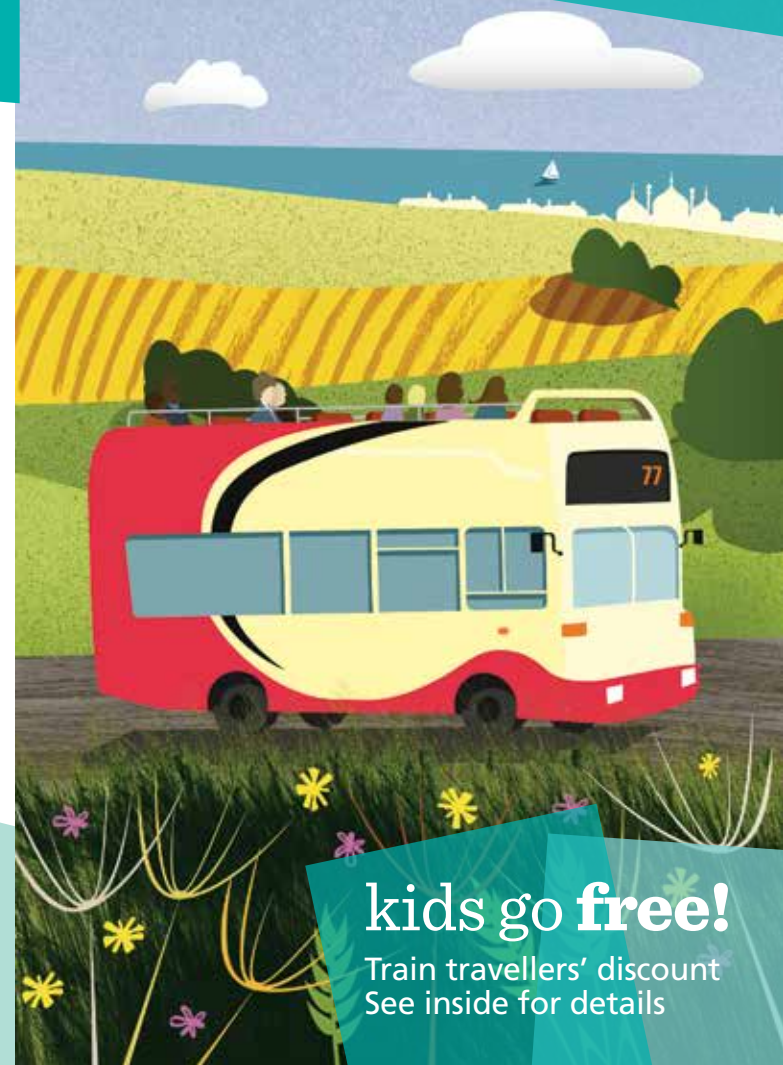
Brighton & Hove
City Council

breeze up to...



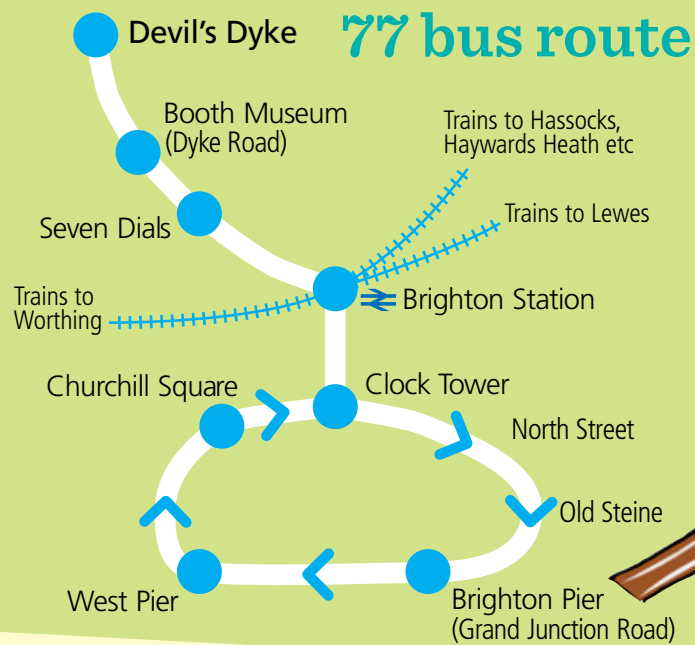
Devil's Dyke on the 77 bus

13 April 2014 to
30 September 2014



kids go free!

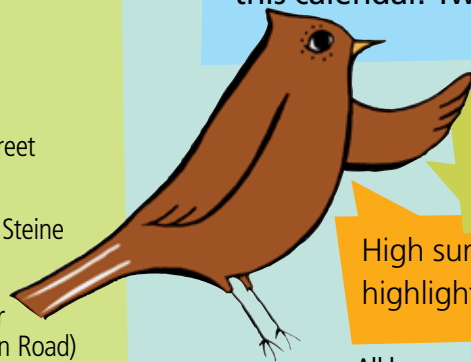
Train travellers' discount
See inside for details



Calendar

13 April 2014 to 30 September 2014

The timetable below operates on all the days highlighted in this calendar. Tweep!



Low season days are highlighted in green

High summer days are highlighted in orange

All buses are buggy and wheelchair friendly.

*On Pride Day, Sat 2 August, extra buses leave Devil's Dyke at 09.35 and 10.05am.

April '14					May '14				June '14					
Su	06	13	20	27		04	11	18	25	01	08	15	22	29
M	07	14	21	28	05	12	19	26	02	09	16	23	30	
Tu	01	08	15	22	29	06	13	20	27	03	10	17	24	
W	02	09	16	23	30	07	14	21	28	04	11	18	25	
Th	03	10	17	24	01	08	15	22	29	05	12	19	26	
Fr	04	11	18	25	02	09	16	23	30	06	13	20	27	
Sa	05	12	19	26	03	10	17	24	31	07	14	21	28	

July '14					August '14				September '14					
Su	06	13	20	27	31	03	10	17	24		07	14	21	28
M	07	14	21	28	04	11	18	25	01	08	15	22	29	
Tu	01	08	15	22	29	05	12	19	26	02	09	16	23	30
W	02	09	16	23	30	06	13	20	27	03	10	17	24	
Th	03	10	17	24	31	07	14	21	28	04	11	18	25	
Fr	04	11	18	25	01	08	15	22	29	05	12	19	26	
Sa	05	12	19	26	02* 09	16	23	30	06	13	20	27		

Timetable

Brighton Pier (stop N)	09.55	10.30	11.15	12.00	12.45	13.30	14.15	15.00	15.45	16.30	17.10	17.50	19.00	20.00
West Pier	09.57	10.32	11.17	12.02	12.47	13.32	14.17	15.02	15.47	16.32	17.12	17.52	19.02	20.02
Churchill Square (stop H)	10.01	10.36	11.22	12.07	12.52	13.37	14.22	15.07	15.52	16.37	17.17	17.57	19.06	20.06
Brighton Station (stop E)	10.05	10.40	11.27	12.12	12.57	13.42	14.27	15.12	15.57	16.42	17.22	18.02	19.10	20.10
Seven Dials, Dyke Road	10.08	10.43	11.30	12.15	13.00	13.45	14.30	15.15	16.00	16.45	17.25	18.05	19.13	20.13
Dyke Rd, Woodruff Avenue	10.14	10.49	11.36	12.21	13.06	13.51	14.36	15.21	16.06	16.51	17.31	18.11	19.19	20.19
Dyke Rd Ave, Tongdean Lane	10.16	10.51	11.38	12.23	13.08	13.53	14.38	15.23	16.08	16.53	17.33	18.13	19.21	20.21
Devil's Dyke Hotel	10.24	10.59	11.46	12.31	13.16	14.01	14.46	15.31	16.16	17.01	17.41	18.21	19.29	20.29
Devil's Dyke Hotel	10.30*	11.15	12.00	12.45	13.30	14.15	15.00	15.45	16.30	17.15	17.50	18.30	19.35	20.35
Dyke Rd Ave, Tongdean Lane	10.38	11.23	12.08	12.53	13.38	14.23	15.08	15.53	16.38	17.23	17.58	18.38	19.42	20.42
Dyke Rd, Woodruff Avenue	10.40	11.25	12.10	12.55	13.40	14.25	15.10	15.55	16.40	17.25	18.00	18.40	19.43	20.43
Seven Dials, Buckingham Place	10.50	11.35	12.20	13.05	13.50	14.35	15.20	16.05	16.47	17.32	18.07	18.47	19.48	20.48
Brighton Station (stop B)	10.52	11.37	12.22	13.07	13.52	14.37	15.22	16.07	16.49	17.34	18.09	18.49	19.50	20.50
Clock Tower, Queens Rd (stop N)	10.58	11.43	12.28	13.13	13.58	14.43	15.28	16.13	16.55	17.40	18.15	18.55	19.56	20.56
Brighton Pier (stop N)	11.01	11.46	12.31	13.16	14.01	14.46	15.31	16.16	16.56	17.41	18.16 ^t	18.56 ^t	19.57	20.57 ^t

High summer evening service 15 June - 31 Aug

t - terminates Old Steine (approx 100 metres from Brighton Pier). We apologise for any delays during works on Dyke Road. Delays will be kept to a minimum but details of any problems can be found at www.buses.co.uk or twitter.com/BrightonHoveBus or phone (01273) 886200. Taxi numbers (in case you miss the last bus!) are: 01273 747474, 01273 204060, 01273 414141 and 01273 205205.

Get fit...

Catch a 77 bus to Devil's Dyke and try one of these Linear Walks

Devil's Dyke to Poynings: A two mile walk on hill paths, via Poynings, down to Poynings Roundabout on the A281. From there catch the Stagecoach or Compass bus 17 back to Brighton. 'Saver' tickets are not valid on the 17 bus.

Devil's Dyke to Upper Beeding: Follow the South Downs Way west for approx four miles to Beeding Hill then 3/4 mile north-west down the hill to the High Street in Upper Beeding. Then take the 2A bus back to Brighton.

Devil's Dyke to Patcham: Take the Sussex Border Path east and then south-east for approx three miles to Patcham. Catch a 5A bus from Old London Rd to Churchill Square in Brighton.

The routes cross open downland, which is fairly steep in places, and are unsurfaced and bumpy. They can become muddy and slippery when wet, so take care! An average walker will cover about 1 mile in half an hour. Use Ordnance Survey Maps 122 (Explorer) or 198 (Landranger).



The mascot of the 77 bus, the skylark, is heard more than it is seen on the Downs. Its song fills the air as it ascends high into the sky.

Relax!

Let someone else do the driving, while you sit back, relax and enjoy the view.

Take in the views!

Why not sit on top and take in the superior views not normally visible from a car.

Car free and carefree...

Take the bus to freedom! Freedom from traffic queues and parking hassles and the freedom to have a drink!

Open top buses run every day in high summer!

(15 June to 31 August, 09.55⁺ to 18.55⁺ – availability and weather permitting)

Some service disruption likely on 3 May, 15 June and 2 August due to major events.

Low season

Buses run Saturdays, Sundays and Public Holidays only.

The low season runs from 13 April to 14 June and from 1 September to 28 September. All buses are low floor and double deck. (A winter timetable leaflet will be available late September).

High summer

Buses run daily from 15 June to 31 August.

During high summer buses are open top[†] double deckers (availability and weather permitting). There are later evening buses too!



Healthy Days Out are a Breeze!

The Breeze bus routes are your passport to fresh air and beautiful walks, in the glorious scenery of the stunning South Downs... they're your passport to a healthy day out (with a very low carbon footprint too!)

[†] The 19.00 and 20.00 from Brighton Pier and 19.35 and 20.35 from Devil's Dyke are not open top.



Events at Devil's Dyke

Please meet at the stone seat on the grass in front of the pub – unless indicated elsewhere.

For more information, or to join our dedicated volunteer team, phone 01273 857712 or e-mail devilsdyke@nationaltrust.org.uk



19/20/21 April
Easter Egg Hunt
11am-3pm.

21 April Egg Rolling
10.45am - 12noon.

27 April Saddlescombe Farm Spring Open Day

10.30am - 4pm. Enjoy tours of Saddlescombe's ancient farm buildings, including the donkey wheel – plus farmers' market, heavy horses and children's games. 20 minute walk to Saddlescombe: follow signs from Devil's Dyke. £5 adult, £3 child, £13 family.



14 September

10.30am-3.30pm
Saddlescombe Farm Heritage Open Day
A rare chance to explore this farm hidden in the downs, once home to the Knights Templar. 20 minute walk from Devil's Dyke. Follow signs on the day. FREE.



Special Offers

for bus passengers

Shepherd and Dog Pub at Fulking offers a free drink* with a main meal (*selected drinks). About 45 mins walk. Call 01273 857382 or visit www.shepherdanddogpub.co.uk

The Hiker's Rest at Saddlescombe offers 10% off refreshments. About 20 mins walk from Devil's Dyke on the South Downs Way. Visit www.southdownsway-hikersrest.co.uk

The Devil's Dyke Country Pub free filter coffee with every slice of cake bought. 1 coffee per bus ticket.

Just show your valid bus ticket or pass to take advantage of these offers!

The 77 bus is operated by Brighton & Hove Buses. All buses are low floor and wheelchair accessible double deckers, with space for buggies. Open top buses work most journeys from 15 June to 31 August. The service is funded by Brighton & Hove City Council and the National Trust. Together with the South Downs National Park Authority they form the 'Breeze up to the Downs Partnership', whose mission is to improve access by bus to popular downland destinations.

For more information go to www.brighton-hove.gov.uk/breezebuses or call 01273 292480.



More information

A scenic walk from Ditchling Beacon to Devil's Dyke

Catch the weekend-only 79 bus to Ditchling Beacon. From the bus stop, walk west along the South Downs Way for about six miles to Devil's Dyke, via Saddlescombe and its Hiker's Rest Tea Rooms: 10% discount with your bus ticket! At the top of the Dyke, turn right along the road to the 77 bus stop (opposite the Devil's Dyke pub). For 79 bus times pick up the 'Breeze up to Ditchling Beacon' leaflet, call 01273 292480 or go to www.buses.co.uk

Exploring Devil's Dyke

A range of leaflets about the area, and ideas for walks or activities, is available from the National Trust information point at Devil's Dyke or contact 01273 857712 www.nationaltrust.org.uk/devils-dyke/

Visit Booth Museum of Natural History

On Dyke Road. Bus stop outside - free admission! Call 01273 292777 for opening times.

Find out about interesting sights along the route and facts about Devil's Dyke.

Download the new Devil's Dyke Podcast at www.visitbrighton.com/things-to-do/walking-guides/podcasts or pick up the new Route Guide leaflet while you're on the 77 bus.

Things you'd never see from a car!